

FOR SALE > COMMERCIAL LAND

PLANO GATEWAY



Renner Rd. & Shiloh Rd. at SH190 (NE Corner)
Plano, TX 75074



- Plano Gateway is a 120-acre mixed-use development (Plano PD-207-R)
- Over 1900' frontage on SH 190 (President George Bush Turnpike)
- Tracts available from 3 to 14.9 acres +/-
- Zoned for office, retail, restaurant, medical, multifamily and senior living
- Plano Gateway is home to the Gateway Plano Apartments; 580 units completed - total of 1,200 units planned and the Savannah at Gateway Senior Independent Living; 292 units
- Hotel properties on-site include: Homewood Suites – 129 rooms; Hampton Inn – 114 rooms and Home2 by Hilton – 125 rooms (under construction)
- Visit www.PlanoGateway.com for Demographic, Employment and Spending data

© 2018 David Hicks Company. All rights are reserved. DAVID HICKS COMPANY has made every effort to obtain the information regarding this property from sources deemed reliable. However, we cannot warrant the complete accuracy thereof subject to errors, omissions, change of price, prior sale, or withdrawal without notice.

FOR SALE > COMMERCIAL LAND

PLANO GATEWAY



Tract 1 Renner Rd. & Shiloh Rd. at SH190 (NE Corner) Plano, TX 75074



- Includes Plano Gateway Center, a 12.26 acre retail center located at Renner Rd and Shiloh Rd anchored by 1.7 acre RaceTrac gas station/convenience store
- Suitable for Office, Medical Office, Retail, Restaurant

© 2018 David Hicks Company. All rights are reserved. DAVID HICKS COMPANY has made every effort to obtain the information regarding this property from sources deemed reliable. However, we cannot warrant the complete accuracy thereof subject to errors, omissions, change of price, prior sale, or withdrawal without notice.

PLANO GATEWAY



Tract 2 - Renner Rd. & Wyngate (NE Corner) Plano, TX 75074

- 13.9 acres +/- next to Plano Gateway Center at the intersection of SH 190 (President George Bush Turnpike) and Renner Rd.
- Site is suitable for Retail, Restaurant and Office/Medical Office
- Excellent visibility and access from Renner Rd. and SH 190 frontage road



Tract 3 - SH190 at Vista Court Dr. (NW Corner) Plano, TX 75074

- 11.818 acres +/- site with frontage on SH 190 (President George Bush Turnpike)
- Site is suitable for Office, Retail, Restaurant
- Located next to Hampton Inn (114 rooms) and Home2 by Hilton (under construction)



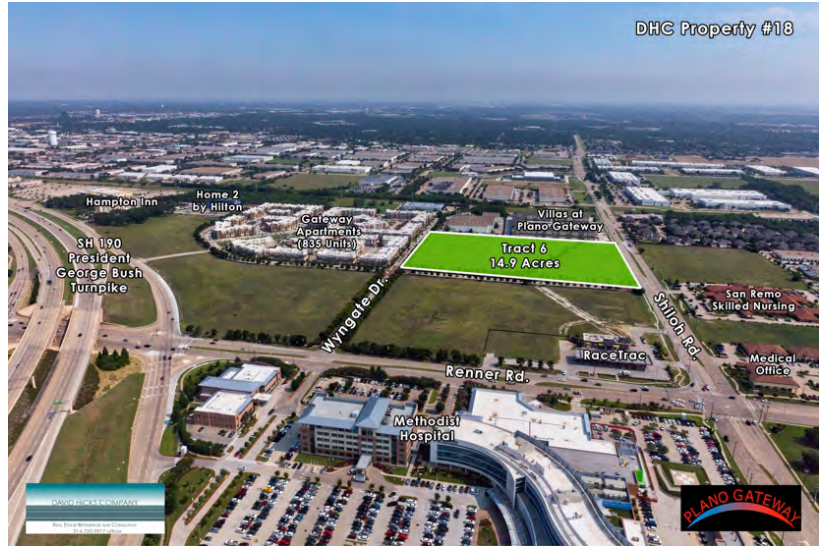
© 2018 David Hicks Company. All rights are reserved. DAVID HICKS COMPANY has made every effort to obtain the information regarding this property from sources deemed reliable. However, we cannot warrant the complete accuracy thereof subject to errors, omissions, change of price, prior sale, or withdrawal without notice.

PLANO GATEWAY



Tract 6 – Shiloh Rd & Wynview (NW Corner)
Plano, TX 75074

- 14.9 acres +/- next to Plano Gateway Center at the intersection of SH 190 (President George Bush Turnpike) and Renner Rd.
- Site is suitable for Retail, Restaurant and Office/Medical Office & Senior Living
- Located next to Villas at Plano Gateway Independent Senior Living



Tract 7 – Wynwood Dr. East of Wyndhurst
Plano, TX 75074

- 4.19 acres
- Site is suitable for Multi-family, Senior living, Office



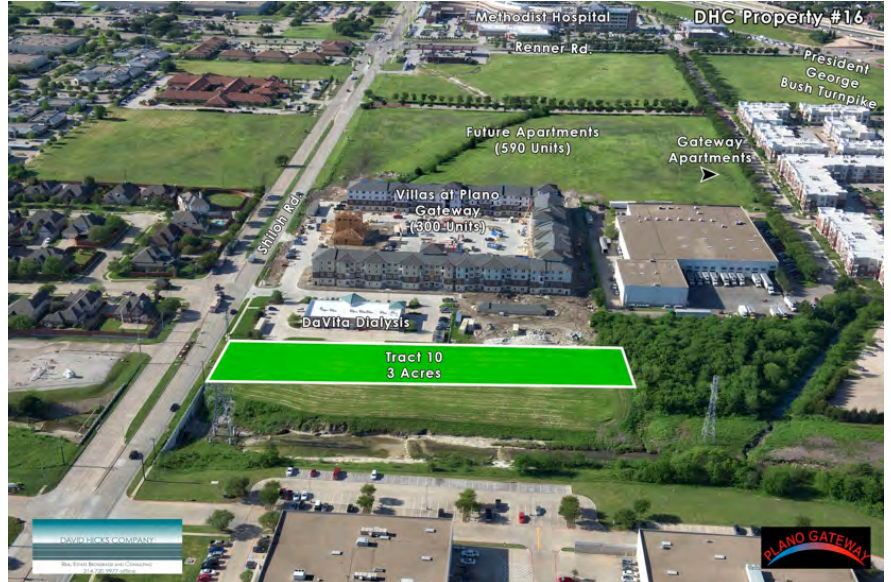
© 2018 David Hicks Company. All rights are reserved. DAVID HICKS COMPANY has made every effort to obtain the information regarding this property from sources deemed reliable. However, we cannot warrant the complete accuracy thereof subject to errors, omissions, change of price, prior sale, or withdrawal without notice.

PLANO GATEWAY



Tract 10 - Shiloh Rd. at Springfield Dr.
Plano, TX 75074

- 3 acre Medical office site adjacent to DaVita Dialysis and Savannah Gateway Independent Senior Living
- Site is suitable for Multi-family, Senior living, Office



© 2018 David Hicks Company. All rights are reserved. DAVID HICKS COMPANY has made every effort to obtain the information regarding this property from sources deemed reliable. However, we cannot warrant the complete accuracy thereof subject to errors, omissions, change of price, prior sale, or withdrawal without notice.